



HydroLevel
Recorder

HYDRO SCIENTIFIC
WEST



Technical Specifications

- **Temperature:**
32°-120°F (0-50 °C)
- **Measurement Range:**
0.4 ft (0.1m) - 9.8'(3m)
- **Accuracy:**
0.2% of range of full scale
- **Supply Voltage:**
10-16.6VDC, 120VAC
- **Dimensions:**
10"x8"x8"(25.4x20.3x20.3 cm)
- **Communications:**
Serial, Blue-tooth
- **Display:**
Backlit LCD
2 Lines x 16 characters

Optional:

- Analogue Outputs
- Radio communication for SCADA
- Modbus Output
- Custom flow output based on channel geometry
- Sensor Range: 0-18ft, 0-25ft
- Integrated 10 W Solar Panel
- Relays: (4)10amps

Overview

The arrival of the HydroLevel Recorder bids farewell to the time consuming and cumbersome tasks of managing, processing, and consolidating strip chart data. The HydroLevel Recorder was designed to collect accurate water level/stage data while maintaining simple operability over cutting edge instrumentation features such as Blue-tooth data downloads, and ASCII formatted data exports. The HydroLevel Recorder is an ideal solution for your water level/stage data acquisition requirements. Standard components include and ultrasonic level sensor, intelligent data logger/PLC ,and solar panel; making this completely integrated system ready to start collecting data within minutes out of the box. Typical field applications include:

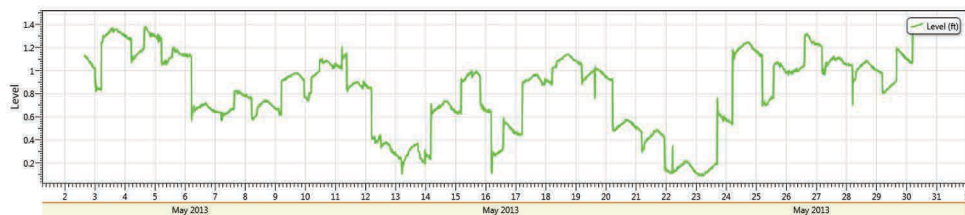
- Irrigation Canals
- Tanks
- Wells
- Turnouts
- Reservoirs
- Flood Channels



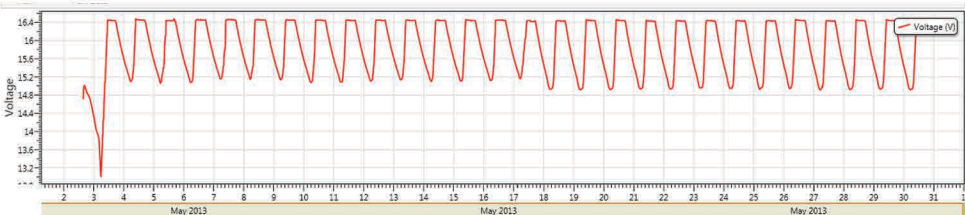


HydroLevel Data:

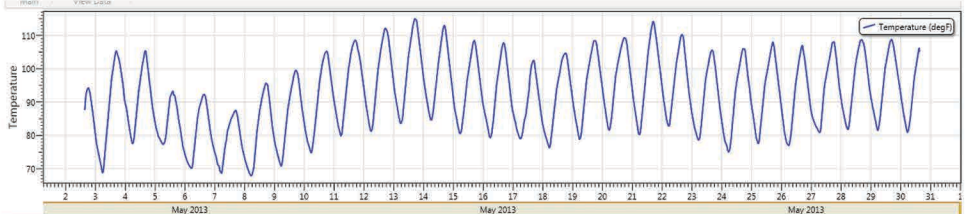
Level Data:



Voltage Data:



Temperature Data:



Software

- Real-time data collection and monitoring via serial and blue-tooth communication
- Easy-to-use, intuitive
- Load, view, and analyse downloaded data
- View multiple parameters in both tabular and graphical view
- Ability to adjust transducer height
- Ability to notate when boards are inserted or removed
- Multiple graphical functionalities like pan, fit to view, etc.
- Export function to ASCII
- Custom Flow Calculations